

Disability Access and Inclusion Plan 2026–2029

Government of South Australia
Department of State Development

Easy Read version



Acknowledgement of Country



Aboriginal peoples are the First Peoples of South Australia.



They have always looked after Country.
Country means the land, water, sky and everything within them.



We respect the important connection that Aboriginal peoples have with Country.



And we respect their Elders from the past and now.

How to use this plan



We are the Government of South Australia
Department of State Development.

We wrote this plan.



We wrote some words in **bold**.

We explain what these words mean.

There is also a list of these words on page 26.



You can ask someone you trust for support to:

- read this plan
- find more information.



This is an Easy Read summary of another plan.

It only includes the most important ideas.



You can find the other plan on our website.

[statedevelopment.sa.gov.au/department/
organisational-governance/disability-access-
and-inclusion-plan](https://statedevelopment.sa.gov.au/department/organisational-governance/disability-access-and-inclusion-plan)

What's in this plan?

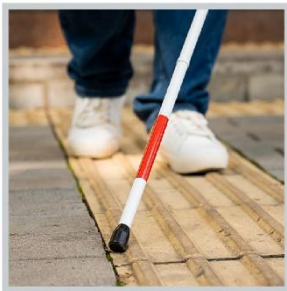
About our plan	5
How we made our plan	7
What our plan focuses on	9
1. Accessible and inclusive communities	11
2. Learning and working	16
3. Good supports and services	19
4. Safety and rights	21
Making sure our plan works well	23
Contact us	25
Word list	26

About our plan

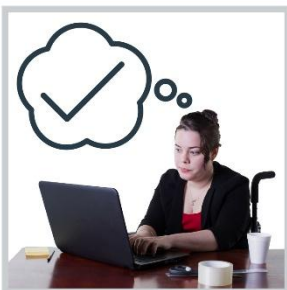


We created a plan called the Disability Access and Inclusion Plan 2026–2029.

We call it our plan.



Our plan is about making our community and workplaces more **accessible**.



When the community and workplaces are accessible, it's easy to:

- find and use things
- move around.



Our plan is also about making our community and workplaces more **inclusive**.



When the community and workplaces are inclusive, everyone can:

- take part
- feel like they belong.



We created our plan because of a law called the Disability Inclusion Act 2018 (SA).

We call it the Act.



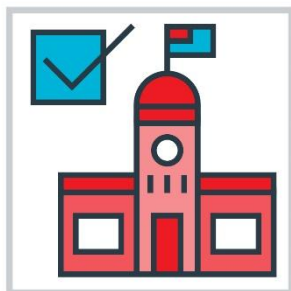
The Act says we need to have a Disability Access and Inclusion Plan.

How we made our plan



Our plan follows the State Disability Inclusion Plan 2025–2029.

We call it the State Plan.

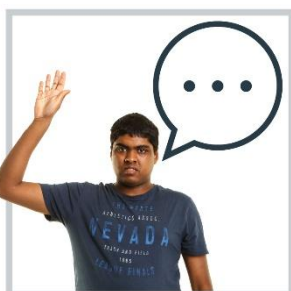


The State Plan explains what different governments in South Australia should do.

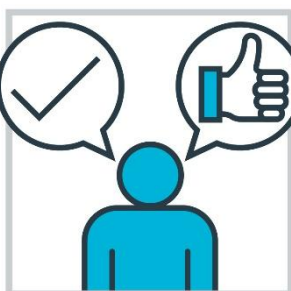


This includes:

- government organisations
- local councils.



We used **feedback** to help make our plan.



When you give feedback, you tell someone what they:

- are doing well
- can do better.

This included feedback from:



- people with disability



- families and carers



- **providers.**

Providers support people with disability by delivering a service.



We also used feedback from our staff to help make our plan.

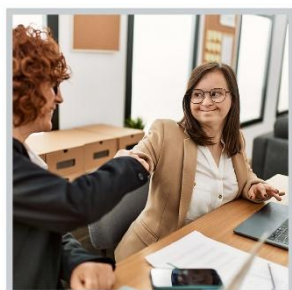
What our plan focuses on



Our plan focuses on 4 important areas.



1. Accessible and inclusive communities



2. Learning and working



3. Good supports and services



4. Safety and rights.



We explain these important areas on the following pages.

1. Accessible and inclusive communities

We want more people with disability to:



- take part in the community



- feel like they belong to the community.

What we will do



We will make sure we plan and run inclusive events.



This includes events that help people understand disability and how to be inclusive.



We will also support events that do this already.

For example, International Day of People with Disability.



We will teach our staff about disability and how to be inclusive.



We will talk to a group of organisations that speak up about how to be inclusive of people with disability.



We will work with these organisations to make the SA Aboriginal Workforce Development Plan.



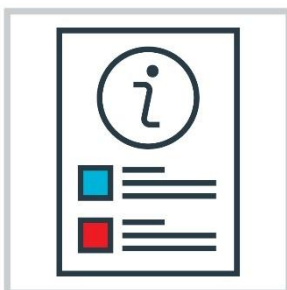
This is a plan to support more Aboriginal and Torres Strait Islander people to find and keep work in South Australia.



We will find ways to make our workplaces and buildings more accessible.



For example, making doors wider for people to pass through.

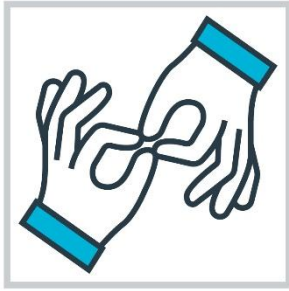


We will share our information in more accessible ways.

For example, Easy Read documents.



We will give a list of services to our staff that can support someone to communicate.



For example, Auslan services.



We will keep improving the way we hear ideas from the community.

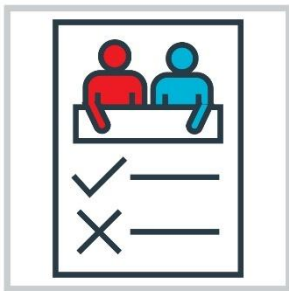
We will make sure we hear from:



- people with disability



- organisations run by Aboriginal people.



We will check and update our rules about how our **committees** work.



A committee is a group of people who meet to talk about ideas.



We will make sure these rules support people with disability to take part.



This includes carers of people with disability.

2. Learning and working



We want training centres to be more inclusive for people with disability.



We want people with disability to have a fair chance to work and earn money.

What we will do



We will make sure training centres have the right skills to better support students with disability.



We will look at programs that support people with disability to find work after school to make sure they are working well.



We will make it easier for students with disability to take part in programs that help them get work.



This includes programs that give student with disability:

- training about how to do a job
- experience doing a job.



We will work with schools and providers to make sure these programs:

- are accessible
- support the different needs of people.



We will make sure our rules for hiring people are inclusive of people with disability.



We will create a committee that includes people with disability and carers.



This committee will make sure our workplace supports our staff to meet their goals at work.



We will find ways to improve the way we collect and use information about people with disability.

This includes information about people with disability in:



- the community



- our workplace.

3. Good supports and services



We want to make sure people with disability can find and use good supports.

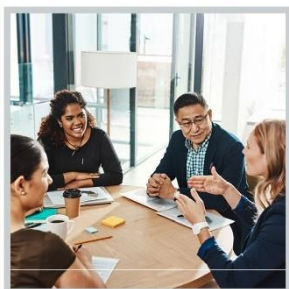


This includes supports that focus on what each person needs.

What we will do



We will take part in meetings that look at how to make South Australia more inclusive for people with disability.



For example, we will take part in Inclusive SA Community of Practice meetings.



We will improve how we connect people with disability to community supports and services.



We will give money to programs and services that help people with disability take part in work.

4. Safety and rights



We want all people with disability to feel safe.



We also want to support the **rights** of all people with disability.

Rights are rules about how people must treat you:

- fairly
- equally.

What we will do



We will make it easier for people with disability to share their thoughts with us.



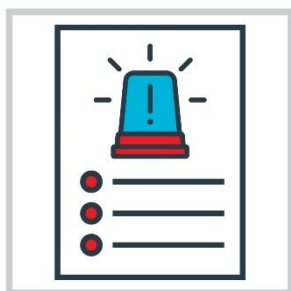
This includes making it easier for people with disability to:

- share feedback
- make a **complaint**.

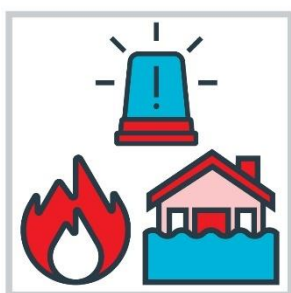


A complaint is when you tell someone that something:

- has gone wrong
- isn't working well.



We will check our plans about what to do in an **emergency**.



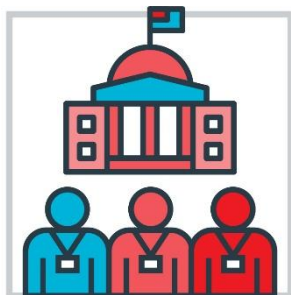
An emergency is a dangerous situation that no one expects to happen.



We will make sure these plans meet the needs of people with disability.

Making sure our plan works well

We will share our plan with:



- everyone who works for the South Australian government



- the community of South Australia.



We will keep track of how well our plan is going.



We will make sure it:

- is up to date
- has the right actions
- has what people with disability need.



We will ask for feedback to help make sure our plan is better.

We will ask:



- people with disability



- carers.



We will write a report about how well our plan is going every year.



Our plan will last for 4 years.

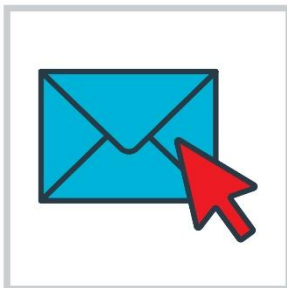
Contact us



You can call us.

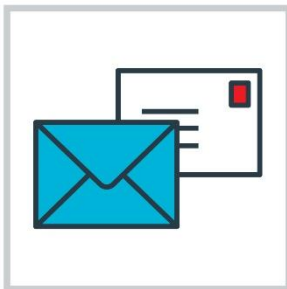
1300 117 088

Ask to speak to our People and Culture team.



You can email us.

DSD.PeopleandCulture@sa.gov.au

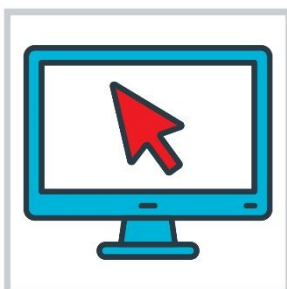


You can write to us.

GPO Box 320

Adelaide

South Australia, 5001

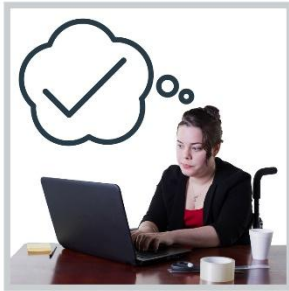


You can visit our website.

[statedevelopment.sa.gov.au/department/
contact-the-department](http://statedevelopment.sa.gov.au/department/contact-the-department)

Word list

This list explains what the **bold** words in this plan mean.



Accessible

When the community and workplaces are accessible, it's easy to:

- find and use things
- move around.



Committee

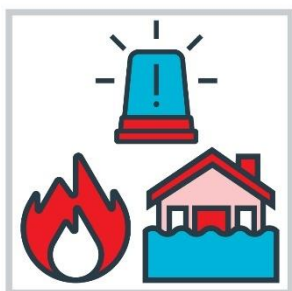
A committee is a group of people who meet to talk about ideas.



Complaint

A complaint is when you tell someone that something:

- has gone wrong
- isn't working well.



Emergency

An emergency is a dangerous situation that no one expects to happen.



Feedback

When you give feedback, you tell someone what they:

- are doing well
- can do better.



Inclusive

When the community and workplaces are inclusive, everyone can:

- take part
- feel like they belong.



Providers

Providers support people with disability by delivering a service.



Rights

Rights are rules about how people must treat you:

- fairly
- equally.



The Information Access Group created this Easy Read document using stock photography and custom images. The images may not be reused without permission. For any enquiries about the images, please visit www.informationaccessgroup.com. Quote job number 6577.